

Office of Financial Aid & Scholarships

A great place to start...or start over.

Contact Information

fin.aid@texarkanacollege.edu

Phone: 903.823.3267

Fax: 903.823.3451

Office Hours: Monday-Thursday: 8-5 Friday: 8-4



TEXARKANA COLLEGE

FAFSA

- <http://www.fafsa.ed.gov/>
- <http://fsaid.ed.gov>
- Keep your FSA id recorded in a safe place!
- Selected for Verification
 - Happens to about 1/2 of students
 - Means extra requirements
 - Watch for Priority Deadlines



Financial Aid Time Frame

Complete the FAFSA as soon as possible!

- Prior-Prior years' tax information
- Financial Aid runs from “August to August”
- Check your financial aid online account for requirements – make sure to accept your terms and conditions!



How Does PELL Work?

- If you receive PELL Grant. PELL pro-rates according to how many eligible hours you enroll in.
- Academic
 - 1-5 hours = Less than half time
 - 6-8 hours = half time
 - 9-11 hours = three-quarter time
 - 12 + hours = full time
- Workforce
 - Daytime *usually* = full time
 - Nighttime *usually* = half time
- PELL pays in TERMS – Fall / Spring / Summer
 - Year round Pell



What is Satisfactory Academic Progress (SAP)?

- GPA Requirement
 - 2.0 GPA – “C” Average
- Completion Rate
 - 67%
- Maximum Time Frame
 - Talk to the FA department before switching majors!



Internal Scholarships

- For information regarding the scholarships offered at Texarkana College, be sure to look at the Scholarships page under the “Paying for College” tab.



Outside Scholarships

- If you receive an outside scholarship that needs to be sent to Texarkana College on your behalf, please have it mailed to:

Texarkana College
Attn: Business Office
2500 North Robison Road
Texarkana, TX 75599



How can I use my financial aid to pay for tuition and books?

- Tuition will be taken directly off your student account – no vouchers, tickets, etc.
- The TC Book Store can see any remaining balance. Remember to bring a picture ID.
- Make sure your aid covers your full balance.
- Parking Permit Forms available at Student Accounts window.



Additional Refund Information

School Costs Money! Know your Balance!

$$\begin{array}{r} \text{Total Financial Aid Award (Grants, Loans, Scholarships)} \\ - \text{Total Charges (Tuition, Fees, Bookstore Purchases)} \\ \hline \text{Amount of Financial Aid Refund} \end{array}$$

- The Business Office processes refunds.
 - Students select a refund preference on their myTC
 - TC Money Card – Herring Bank
 - Personal Bank Account
 - **RED RIVER CREDIT UNION** – Please contact bank for acct. #
 - Once the SEMESTER starts, refund percentages decrease and some fees are NON-REFUNDABLE.
- Refunds usually occur about 1 month after the first day of class.



Student Loan Refund Policy

TC policy requires that all student loans be disbursed in two payments.

Disbursement 1

100% of Pell Grant
50% of Student Loan

— Full Balance

Possible First Refund

Disbursement 2

Remaining 50% of
Student Loan

— Any Remaining
Balance

Possible Second Refund



Student Loan Refund Policy

Example: Student A

\$2,000 Total loans for semester

\$1,000 Disbursement One

– \$700 Charges for Semester

= \$300 Net Refund

\$1,000 Disbursement Two

– \$0 Remaining charges

= \$1,000 Net Refund

Example: Student B

\$2,000 Total loans for semester

\$1,000 Disbursement One

– \$1,200 Charges for Semester

= \$0 Net Refund

\$1,000 Disbursement Two

– \$200 Remaining charges

= \$800 Net Refund



Need to Contact Us?

FINANCIAL AID OFFICE

- Questions...
 - **EMAIL:** fin.aid@texarkanacollege.edu
 - **PHONE:** (903) 823-3267
- **INFORMATION/UPDATES....**
www.texarkanacollege.edu/admfinaid/finaid



Need to Contact Us?

BUSINESS OFFICE

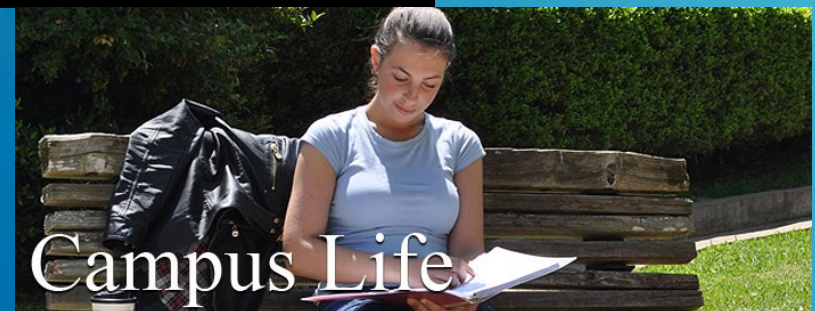
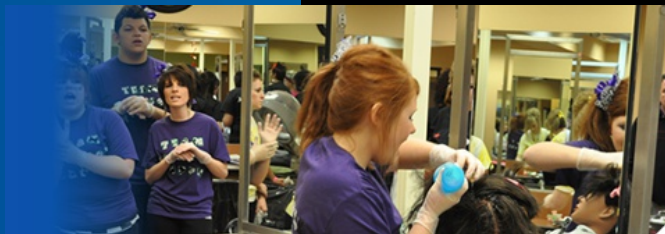
- **EMAIL:** business.office@texarkanacollege.edu
- **PHONE:** (903) 823-3331
- **MAIL:** Texarkana College
ATTN: Business Office
2500 N. Robison Road
Texarkana, TX 75599



Have a GREAT TC experience!

ASK QUESTIONS!

Let us be a part of your success!



TEXARKANA COLLEGE